

IC-604

Technical Training Course

Welcome to the **IC-604** Technical Training Course Comparison Program.
This course will cover three lessons of the **IC-604**.

Please take the test after completing this course.



To download these files, you must have [Adobe Acrobat](#) installed on your computer.



*This course should take you
approximately **40 minutes**
to complete.*









KONICA MINOLTA

Symbol Key

❖ What do each of these symbols mean?

- ① This is an icon for a Key Point or Important Point to remember.
- 📌 This is an icon for anything of Note.
- 🚫 This is an icon for a general Warning that could result in potential danger.
- ⚠️ This is an icon for a Caution and should be taken into special consideration.

	This indicates that the content is designated for Instructor Led Training.
	This indicates that the content is designated for Web Based Training.
	This indicates that the content is to be performed in a Lab Exercise.
	This indicates that the content is a new feature.
	This indicates that the content is an update or upgraded feature.
	This indicates that the content is exclusive to a particular model series. The respective model series will be shown as text on a colored tab (examples on right of screen).

In the case of shared content, tabs on the right edge indicate which series machines this slide content applies to.

Copyrights and Trademarks/ Disclaimer

❖ Copyrights and Trademarks

KONICA MINOLTA and KONICA MINOLTA logo are the registered trademarks of KONICA MINOLTA, INC.

Copyright 2016-2019 Konica Minolta, Inc.

❖ Disclaimer

Product training materials may not be reproduced in part or in full without permission. The information in Product training materials is possibly changed without any notice. Under no circumstances shall KONICA MINOLTA, INC. be liable for any damage or consequences, incurred by the user of this Product training material (“Material”), or any third party that results from the information or Material, or the use of the information or Material.

Lesson 1

Topics covered in the lesson include:

- 1.1 Product Planning
- 1.2 Product Specifications

❖ Product Positioning

▪ IC-604

The IC-604 is the successor to the IC-603.

❖ Product Concept & Planning Policy

▪ IC-604

- ❖ The automatic color adjustment and base distortion adjustment using the IQ-501 have been made available for the first time for the IC-604. This results in enhancement of the printing availability rate via a shortening of the required adjustment time, and a large step toward environment requiring minimum user skills.
- ❖ The APPE is compatible with version 4.6.

❖ Supported Machine

▪ C6100/C6085

Product Specifications

NEW

WBT

❖ Update

Item	Timing	Overview		Slide
Printer Driver	Ver. 5.0	C6100	Mac OS 10.9 ~ 10.14 Windows Server 2019 was added.	Yes
	Ver. 4.0	C6100	Mac OS 10.9 ~ 10.13	
APPE	Ver. 5.0	C6100	Ver. 4.6	Yes
	Ver. 4.0	C6100	Ver. 4.2	



In this lesson you learned to:

- 1.1 Product Planning
- 1.2 Product Specifications

Lesson 2

Topics covered in the lesson include:

- 2.1 Network
- 2.2 Controller Administrator Setting
- 2.3 Controller Machine Setting
- 2.4 Printer
- 2.5 Job Centro

Network – NIC Settings

❖ Update

Item	Timing	Overview		Slide
<p>Detail Setting Auto Inspection</p>	Ver. 5.0	C6100	<p>Set an automatic inspection notification. When your E-mail is registered, a notification E-mail is automatically sent to you if a spot is detected on an image. To configure this setting, the destination E-mail address must be registered in advance.</p> <p>To register the destination E-mail address, follow the procedure shown below. [Utility] - [Administrator Setting] - [Network Setting] - [NIC Settings] - [Detail Settings] - [Status Notif. Setting] - [Register Notif. Address] - [E-mail] - [ON] - [Edit E-mail Address]</p> <p>To configure the automatic inspection notification setting, follow the procedure below. [Utility] - [Administrator Setting] - [Network Setting] - [NIC Settings] - [Detail Settings] - [Status Notif. Setting] - [Register Notif. Address] - [E-mail] - [ON] - [Notification Items] - [Auto Inspection]</p>	No
	Ver. 4.0	C6100	Unsupported	

Controller Administrator Setting – Software Switch Setting

UP

WBT

❖ Software Switch Setting

Item Name	Overview
Overview	When printing or others cannot be operated due to the environment, select the corresponding switch and solve the problem.
Number of screens	1
Menu Items	- Deactivate and activate each switch number to change the contents of this machine.
Remarks	For the details of each switch number, refer to the linked file “Software Switch Setting”.

Controller Machine Setting – Color Management

NEW

WBT

❖ Update

Item	Timing	Overview		Slide
[Target Settings]	Ver. 5.0	C6100	<p>The setting items of [Japan Color control strip (Digital)] and [Japan Color control strip + IT8.7/4 + JC Own (Digital)] are added to [Wedge/Chart].</p> <p>[Japan Color control strip] and [Japan Color control strip + IT8.7/4 + JC Own] of [Wedge/Chart] are renamed to [Japan Color control strip (Proof)] and [Japan Color control strip + IT8.7/4 + JC Own (Proof)].</p>	No
	Ver. 4.0	C6100	None	
[Color Validation]	Ver. 5.0	C6100	<p>Addition of Number of Print Jobs (Averaging). To stabilize the image quality, the average is taken by executing processing several times.</p> <p>The validation result display based on GRACoL is changed from ΔE to $\Delta E00$.</p>	No
	Ver. 4.0	C6100	None	
[Exact Color]/ [G7 Calibration]	Ver. 5.0	C6100	<p>Addition of Number of Print Jobs (Averaging). To stabilize the image quality, the average is taken by executing processing several times.</p>	No
	Ver. 4.0	C6100	None	
[Printer Profile]	Ver. 5.0	C6100	<p>Addition of Number of Print Jobs (Averaging). To stabilize the image quality, the average is taken by executing processing several times.</p>	No
	Ver. 4.0	C6100	None	

Printer – Overview (1/3)

NEW

WBT

❖ Update

Item	Timing	Overview		Slide
APPE	Ver. 5.0	C6100	APPE4.6	Yes
	Ver. 4.0	C6100	APPE4.2	
OS	Ver. 5.0	C6100	Mac OS 10.9 ~ 10.14 Windows Server 2019 was added.	Yes
	Ver. 4.0	C6100	Mac OS 10.9 ~ 10.13	

❖ Specifications: PDL and Supported OS

Item	Description	
Type	PS Plug-in, PPD	
PDL (Page Description Language)	PS	Adobe Postscript3 (CPSI: 3020)
	PDF	PDF Ver. 1.7, APPE Ver. 4.6, PDF/VT Ver.2
	PCL	5c-compatible, XL-compatible (PCL6 Ver.3)
	TIFF	Ver. 6-compliant
	PPML	Ver. 2.2
Built-in Fonts	PS	Latin fonts: 136 Adobe fonts + Japanese fonts: 2 fonts
	PCL	Latin fonts: 80 Agfa MicroType fonts, 36 Symbolset fonts + Japanese fonts: 2 fonts

- After this page, a description of the PS Plug-in printer driver that is discussed in this lesson is included. Refer to the User's Guide for further details on the PPD printer driver and other functions.

❖ Specifications: PS Plug-in

Item	Description	
OS	Windows	7, 8, 8.1, 10 Server 2008, Server 2008 R2, Server 2012, Server 2012 R2, Server 2016, Server 2019
	Mac	10.9, 10.10, 10.11, 10.12, 10.13, 10.14
Languages	9 (E, F, I, G, S, J, CN, TW, K)	
Resolution	1200 x 1200 dpi, 600 x 600 dpi	
Gradation	8bit / 256 gradations, 1bit / 2 gradations	
Print Area	Follows main body specifications	
Printing Speed	Follows main body specifications	

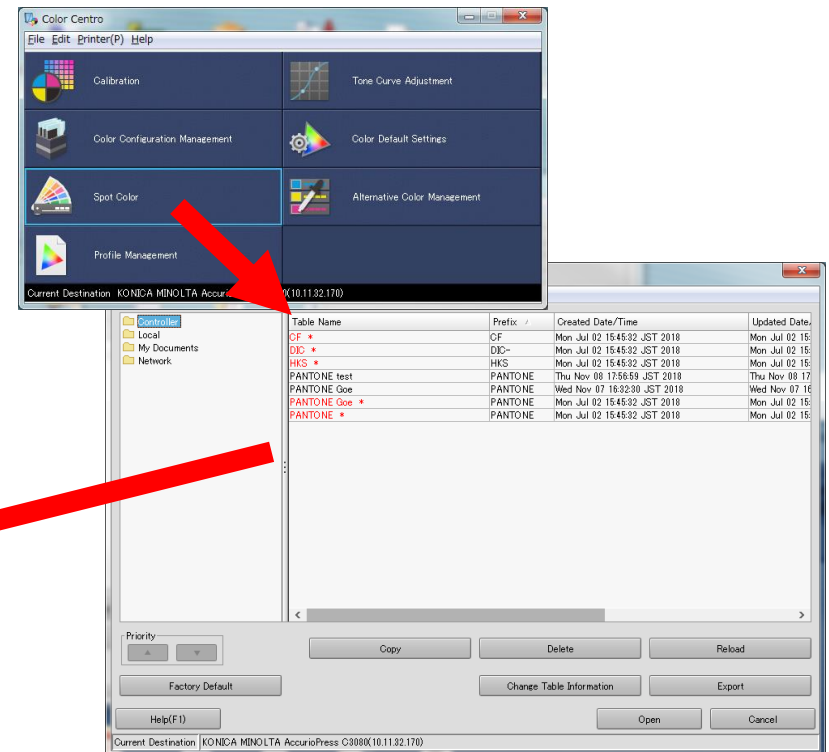
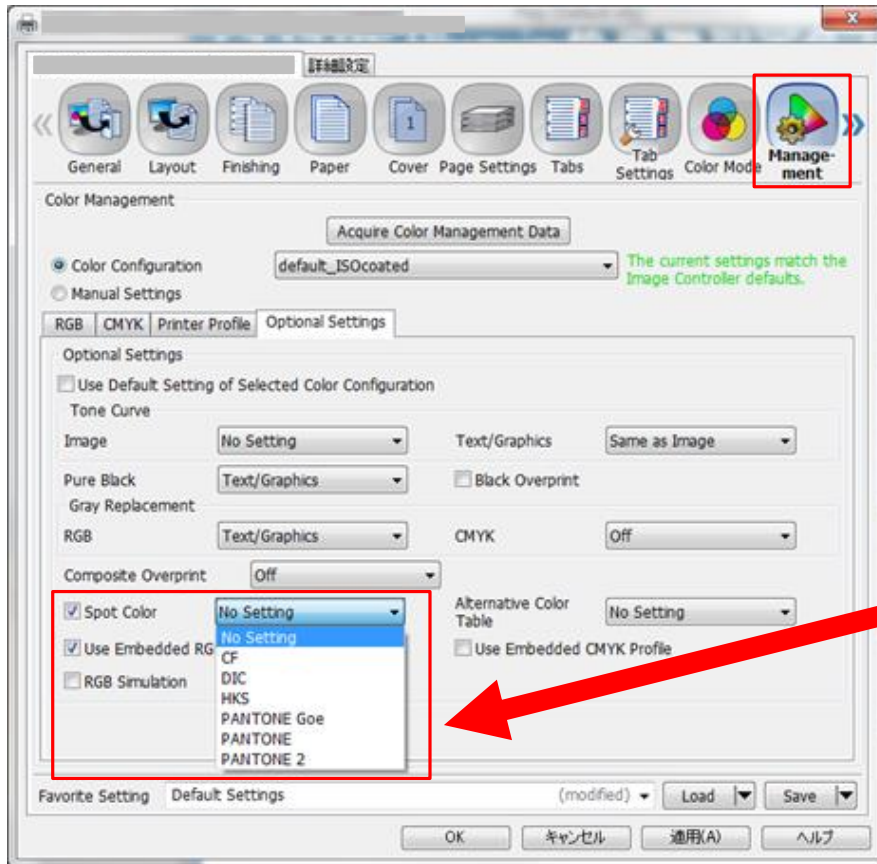
PS Plug-in: Management Tab

NEW

WBT

❖ Spot Color

The spot color table configured by Color Centro can be specified for each job.

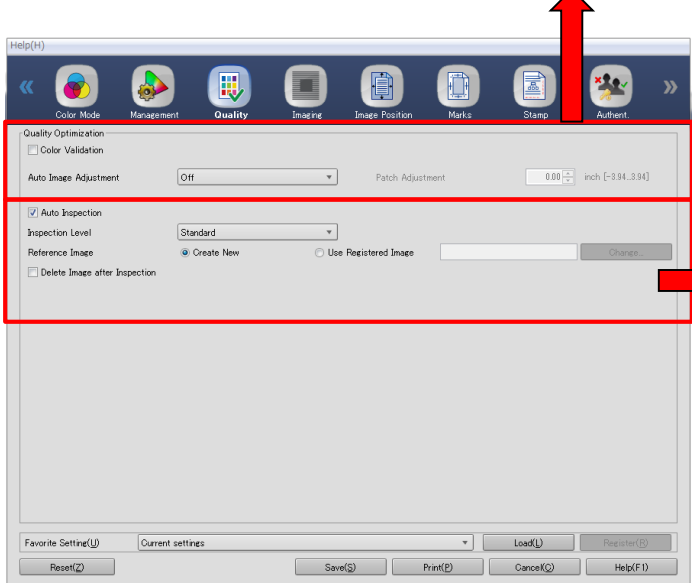


❖ Update

Item	Timing	Overview		Slide
Management tab	Ver. 5.0	C6100	It is possible to select the spot color priority table.	No
	Ver. 4.0	C6100	-	
Quality Tab	Ver. 5.0	C6100	Addition of [Auto Inspection] setting	Yes
	Ver. 4.0	C6100	-	

❖ Quality Tab

Color Validation	Allows you to use the Color Validation function when printing.	
	Note	<ul style="list-style-type: none"> This function is available when the paper tray is set to Auto Select. Displayed only when Intelligent Quality Optimizer IQ-501 is connected.
Auto Image Adjustment	Allows you to perform the automatic image adjustment depending on the setting that is selected when printing.	
	Item	Off, Position/Gradation, Position
Note	Displayed only when Intelligent Quality Optimizer IQ-501 is connected. When you select [Position/Gradation], you can enter the setting value in [Patch Adjustment] to adjust the patch position.	



Auto Inspection	Set the [Auto Inspection] function that automatically discharges problematic output paper.	
	Note	For the presetting and the required options, refer to Chapter 9 in Main Body.
Inspection Level	Select the inspection standard for automatic inspection.	
	Item	Essential, Standard, Premium
Note	For details on how to adjust each inspection standard, refer to Chapter 9 in Main Body.	
Reference Image	Select whether to create a new reference image or use a registered image.	
	Item	Create New, Use Registered Image
Note	Select [Use Registered Image], and specify the target reference image.	
Delete Image after Inspection	Specify this option when deleting [Reference Image] at the end of printing.	



In this lesson you learned to:

- 2.1 Network
- 2.2 Controller Administrator Setting
- 2.3 Controller Machine Setting
- 2.4 Printer
- 2.5 Job Centro

Lesson 3

Topics covered in the lesson include:

3.1 Service Mode for the Image Controller

Service Mode for the Image Controller

UP

WBT

❖ DIPSW for the Image Controller

DIPSW for the image controller is unified with the DIPSW for the main body.

DIPSW for the image controller: **DIPSW 251~**

For details, refer to the DIPSW List.

Procedure:

1. Go into the Service Mode.
2. Enter a [System Setting].
3. Enter a [Software DIPSW Setting].





In this lesson you learned to:

3.1 Service Mode for the Image Controller